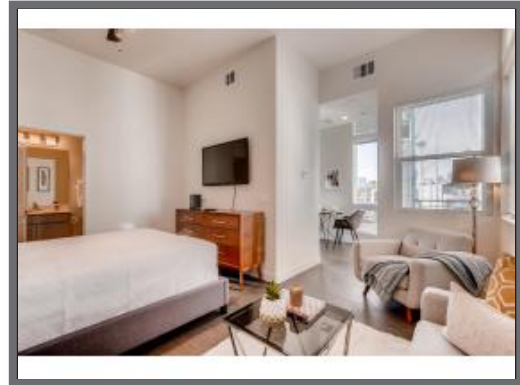


### About this property:

Posh Studio in the Heart of Las Vegas

<b>Sqft:</b>	450
<b>Bedrooms:</b>	0
<b>Sleeps:</b>	1-4
<b>Floor:</b>	2nd
<b>Property Type:</b>	Condo



Imagine waking up and enjoying a view of the Stratosphere right from your own kitchen and balcony. Picture yourself sipping your morning beverage and eating a baked good from the bakery within the very same complex. This studio apartment is located in the heart of Las Vegas -- the perfect location for any individual traveling for work or play. Nestled within the Las Vegas Arts District, this complex is also close to the Medical District, Smith Center, Las Vegas Academy of Arts and more.

### Features & Amenities

<b>Parking:</b>	Detached assigned space
<b>Pets:</b>	No
<b>Workout center:</b>	None
<b>Workspace area:</b>	None
<b>Pool:</b>	None
<b>A/C:</b>	Central A/C
<b>Secure access:</b>	24-hour Attendant
<b>Washer/dryer:</b>	In Unit
<b>Private outdoor space:</b>	Balcony
<b>Near public transport:</b>	Less than 0.25 miles

